



Turn to the experts

03/11/2026



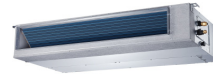
# R410A Ductless Systems

[www.CarrierGreatLakes.com](http://www.CarrierGreatLakes.com)

## 2-Ton Single Zone Heat Pump System

### Standard Features

- Variable Speed (Inverter) Compressor
- 100% Cooling Capacity at -22°F
- 100% Heating Capacity at -4°F (09 Only)
- Heating operating range -22° - 86°F
- Relative Humidity Sensor



Slim Duct



Air Handler

Model #	Type	Seer2/EER2	Cooling BTUH	Heating BTUH	Voltage	Dimensions W x H x D	Weight	Price
38MARBQ24AA3	Outdoor				208/230-1-60	37.24" x 31.89" x 16.14"	134.48 lbs	1112.00
40MBDQ24---3	Slim Duct	20.5/12.5	24,000	24,000	208/230-1-60	43.31" x 9.8" x 27.56"	57.3 lbs	617.00
40MBABQ24XB3	Air Handler	21.0/12.5	23,000	26,600	208/230-1-60	17.5" x 45" x 21"	106.7 lbs	787.00

\*\*\*40MBAB Features Built-In 24v Interface for Third Party Thermostat

## 3-Ton Single Zone Heat Pump System

### Standard Features

- Variable Speed (Inverter) Compressor
- Piping Length 213'
- Cooling operating range -22° - 130°F
- Heating operating range -22° - 86°F
- Cassette Grille Sold Separately



4-Way Cassette

Model #	Type	Seer2/EER2	Cooling BTUH	Heating BTUH	Voltage	Dimensions W x H x D	Weight	Price
38MBRCQ36AA3	Outdoor				208/230-1-60	37.24" x 31.89" x 16.14"	148.59 lbs	1916.00
40MBCAQ36XA3	Cassette*	19.2/9.4	36,000	38,000	208/230-1-60	32.68" x 9.65" x 32.68" "	59.97 lbs	883.00
40MBCQ02XXX4	Grille					37.4" x 2.17" x 37.4"	11.02 lbs	113.00

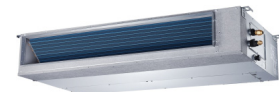
## 4-Ton Single Zone Heat Pump System

### Standard Features

- Variable Speed (Inverter) Compressor
- Piping Length 213'
- Cooling operating range -22° - 130°F
- Heating operating range -22° - 86°F
- Cassette Grille Sold Separately



4-Way Cassette



Slim Duct

Model #	Type	Seer2/EER2	Cooling BTUH	Heating BTUH	Voltage	Dimensions W x H x D	Weight	Price
38MBRCQ48AA3	Outdoor				208/230-1-60	37.48" x 52.48" x 16.34"	219.14 lbs	2467.00
40MBCAQ48XA3	Cassette*	18.5/9.5	48,000	50,000	208/230-1-60	32.68" x 11.3" x 32.68"	64.59 lbs	926.00
40MBCQ02XXX4	Grille					37.4" x 2.17" x 37.4"	11.02 lbs	113.00
40MBDQ48---3	Slim Duct	15.1/8.5	48,000	49,500	208/230-1-60	47.24" x 11.81" x 31.5"	119.71 lbs	762.00

# R410A Ductless Systems

[www.CarrierGreatLakes.com](http://www.CarrierGreatLakes.com)

## 2.5 Ton Multi-Zone Heat Pump Split System

### Standard Features

- Variable Speed (Inverter) Compressor
- Connect 2 - 4 multiple style indoor units
- Cooling operating range -13° - 122°F
- Heating operating range -22° - 86°F
- 100% Heating Capacity @ 5°
- Wireless Remote Controller included with each Console and Ducted indoor unit.
- Up to 25.0/12.5 SEER2/EER2 rating.



**NOTE: indoor unit powered off of outdoor unit**

Model #	Type	Cooling BTUH	Heating BTUH	Voltage	Dimensions W x H x D	Weight	Price
38MGHBQ30DA3	Outdoor	30,000	30,000	208/230-1-60	37.24" x 31.89" x 16.14"	169.09 lbs	1580.00
40MCCAQ09XA3	1-Way Cassette	9,000	14,400	208/230-1-60	50.31" x 8.98" x 13.19"	43.87 lbs	521.00
40MBDQ09---3	Slim Duct	9,000	10,000	208/230-1-60	27.6" x 7.9" x 17.7"	39.9 lbs	450.00
40MBFAQ12XA3	Floor Console	12,000	12,000	208/230-1-60	31.26" x 24.45" x 7.87"	32.85 lbs	371.00
40MBDQ12---3	Slim Duct	12,000	12,000	208/230-1-60	27.6" x 7.9" x 17.7"	39.9 lbs	459.00
40MAHBQ18XA3	Highwall	18,000	18,000	208/230-1-60	37.99" x 12.56" x 9.41"	27.12 lbs	329.00
40MCCAQ18XA3	1-Way Cassette	16,700	18,800	208/230-1-60	50.31" x 8.98" x 13.19"	45.19 lbs	576.00
40MBCQ18---3	Cassette**	16,000	18,000	208/230-1-60	22.44" x 10.24" x 22.44"	39.7 lbs	461.00
40MBFQ18---3	Console	17,000	21,500	208/230-1-60	42.05" x 26.57" x 9.25"	55.1 lbs	584.00
40MBDQ18---3	Slim Duct	16,500	19,000	208/230-1-60	34.65" x 8.27" x 23.62"	50.7 lbs	532.00
40MBDQ24---3	Slim Duct	24,000	24,000	208/230-1/60	43.31" x 9.8" x 27.56"	57.3 lbs	617.00
40MBABQ24XB3	Air Handler	23,000	26,000	208/230-1/60	17.5" x 45" x 21"	106.7 lbs	787.00

\*\*Cassette Grille Sold Separately\*\*

\*\*\*40MBAB Features Built-In 24v Interface for Third Party Thermostat

## Rated Combinations

Two Zones	Three Zones		Four Zones	
6+9	6+6+6	9+9+9	6+6+6+6	6+12+12+12
6+12	6+6+9	9+9+12	6+6+6+9	6+12+12+18
6+18	6+6+12	9+9+18	6+6+6+12	9+9+9+9
6+24	6+6+18	9+9+24	6+6+6+18	9+9+9+12
9+9	6+6+24	9+12+12	6+6+6+24	9+9+9+18
9+12	6+9+9	9+12+18	6+6+9+9	9+9+12+12
9+18	6+9+12	9+12+24	6+6+9+12	9+9+12+18
9+24	6+9+18	9+18+18	6+6+9+18	9+12+12+12
12+12	6+9+24	12+12+12	6+6+9+24	12+12+12+12
12+18	6+12+12	12+12+18	6+6+12+12	
12+24	6+12+18	12+18+18	6+6+12+18	
18+18	6+12+24	12+12+24	6+6+12+24	
	6+18+18		6+6+18+18	
	6+18+24		6+9+9+9	
			6+9+9+12	
			6+9+9+18	
			6+9+9+24	

# R410A Ductless Systems

[www.CarrierGreatLakes.com](http://www.CarrierGreatLakes.com)

## 3 Ton Multi-Zone Heat Pump Split System

### Standard Features

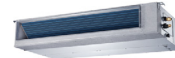
- Variable Speed (Inverter) Compressor
- Connect 2 - 4 multiple style indoor units
- Cooling operating range -13° - 122°F
- Heating operating range -22° - 86°F
- 100% Heating Capacity @ 5°
- Wireless Remote Controller included with each Console and Ducted indoor unit.
- Up to 21.8/13.6 SEER2/EER2 rating.



Highwall



4-Way Cassette



Slim Duct



1-Way Cassette



Floor or Ceiling Console



Air Handler

**NOTE: indoor unit powered off of outdoor unit**

Model #	Type	Cooling BTUH	Heating BTUH	Voltage	Dimensions W x H x D	Weight	Price
38MGHBQ36DA3	Outdoor	36,000	36,000	208/230-1-60	37.48" x 52.48" x 16.34"	223.1 lbs	2016.00
40MCCAQ09XA3	1-Way Cassette	9,000	14,400	208/230-1-60	50.31" x 8.98" x 13.19"	43.87 lbs	521.00
40MBDQ09---3	Slim Duct	9,000	10,000	208/230-1-60	27.6" x 7.9" x 17.7"	39.9 lbs	450.00
40MBFAQ12XA3	Floor Console	12,000	12,000	208/230-1-60	31.26" x 24.45" x 7.87"	32.85 lbs	371.00
40MBDQ12---3	Slim Duct	12,000	12,000	208/230-1-60	27.6" x 7.9" x 17.7"	39.9 lbs	459.00
40MAHBQ18XA3	Highwall	18,000	18,000	208/230-1-60	37.99" x 12.56" x 9.41"	27.12 lbs	329.00
40MCCAQ18XA3	1-Way Cassette	16,700	18,800	208/230-1-60	50.31" x 8.98" x 13.19"	45.19 lbs	576.00
40MBCQ18---3	Cassette**	16,000	18,000	208/230-1-60	22.44" x 10.24" x 22.44"	39.7 lbs	461.00
40MBFQ18---3	Console	17,000	21,500	208/230-1-60	42.05" x 26.57" x 9.25"	55.1 lbs	584.00
40MBDQ18---3	Slim Duct	16,500	19,000	208/230-1-60	34.65" x 8.27" x 23.62"	50.7 lbs	532.00
40MBDQ24---3	Slim Duct	24,000	24,000	208/230-1/60	43.31" x 9.8" x 27.56"	57.3 lbs	617.00
40MBABQ24XB3	Air Handler	23,000	26,000	208/230-1/60	17.5" x 45" x 21"	106.7 lbs	787.00

\*\*Cassette Grille Sold Separately\*\*

\*\*\*40MBAB Features Built-In 24v Interface for Third Party Thermostat

## Rated Combinations

Two Zones	Three Zones		Four Zones		
9+18	6+6+24	9+18+24	6+6+6+18	6+9+18+18	9+9+18+24
9+24	6+9+12	9+24+24	6+6+6+24	6+9+18+24	9+12+12+12
12+12	6+9+18	12+12+12	6+6+9+12	6+9+24+24	9+12+12+18
12+18	6+9+24	12+12+18	6+6+9+18	6+12+12+12	9+12+12+24
12+24	6+12+18	12+12+24	6+6+9+24	6+12+12+18	9+12+18+18
18+18	6+12+24	12+18+18	6+6+12+12	6+12+12+24	9+18+18+18
18+24	6+18+18	12+18+24	6+6+12+18	6+12+18+18	12+12+12+12
24+24	6+18+24	12+24+24	6+6+12+24	6+12+18+24	12+12+12+18
	6+24+24	18+18+18	6+6+18+18	6+18+18+18	12+12+12+24
	9+9+9	18+18+24	6+6+18+24	9+9+9+9	12+12+18+18
	9+9+12		6+9+9+9	9+9+9+12	
	9+9+18		6+9+9+12	9+9+9+18	
	9+9+24		6+9+9+18	9+9+9+24	
	9+12+12		6+9+9+24	9+9+12+12	
	9+12+18		6+9+12+12	9+9+12+18	
	9+12+24		6+9+12+18	9+9+12+24	
	9+18+18		6+9+12+24	9+9+18+18	



Turn to the experts

03/11/2026



# Carrier Heat Pumps

[www.CarrierGreatLakes.com](http://www.CarrierGreatLakes.com)

## 38MURA Variable Speed Crossover Heat Pump

Carrier model 38MURA, a variable-speed, inverter-driven single zone Heat Pump, is an innovative solution for traditional heat pump replacements. This system features an integrated 24V interface, standard unitary line set sizes, and ratings with Carrier's current fan coil, furnace/cased coil offerings. Consult PDD for performance ratings.

### Standard Features

- 14.7 - 18 SEER2 / 8.2 - 12.4 EER2 / 8.2 - 9.8 HSPF2
- Galvanized steel cabinet, bonderized and coated with baked-enamel finish on the inside and outside
- Sound
  - Acoustic Lining
  - Sound as low as 54 dBa
- Conventional line set sizes
  - Requires insulation of suction line only
  - Line lengths up to 213'
- 24V Interface Pre-Installed
  - Third-Party Thermostat Compatible
- Dual-Fuel Capability with AHRI Rated Combinations
- Reliability, Quality and Toughness
  - Inverter-driven, variable speed, rotary Compressor
  - Factory installed Base Pan Heater
  - Factory installed Crankcase Heater
  - Auto-Restart function
  - Condenser High Temp Protection
  - Anti-corrosive fin coating
  - Cooling operation down to -22F
  - Heating operation down to -22F

Performance SERIES



ISO 9001  
QMI-SAI Global



### Limited Warranty

- 10-Year limited warranty to original purchaser, owner occupied, residential applications on compressor & parts when registered within 90 days after installation, otherwise 5-year warranty

Model #	Tons	Volts Phase (60 Hz)	Line Set --Sizes-- Vapor*, Liquid	Unit Dimensions H x W x D	Approx Ship Weight	Price
38MURAQ48AB3	4.0	208/230-1-60	3/4", 3/8"	52.48" x 37.48" x 16.34"	248.68 lbs	2640.00

\* Units are rated with 25' of line set length, See Vapor Line Sizing and Cooling Capacity Loss table when using other sizes and lengths.